

Planetrehab 2.261 Release Note March 6th, 2013

Correct Coding Initiative (CCI) Edits

In an effort to increase the speed at which our clients get paid for treatment provided, we have introduced a reminder system for conflicting CPT codes.

Certain CPT codes cannot be billed in conjunction with other CPT codes. In the past, we would address the issue after the claim was submitted, which affected the speed at which those claims would be paid. Now, the software will warn you if you are billing conflicting codes. If you bill conflicting codes, Planetrehab will tell which codes are in conflict and will give you the opportunity to either enter a 59 modifier so the codes can be billed at the same time or delete the conflicting code and enter an alternative code.

For example, if you bill 97140 (Manual Therapy Techniques) and 97012 (Traction, Mechanical), Planetrehab will display the following message at the bottom of the charge screen:



The screenshot shows a form with the following fields and controls:

CPT Code	Units	Min/U	Mod.	Diag Ptrs
97140	2	15	59	

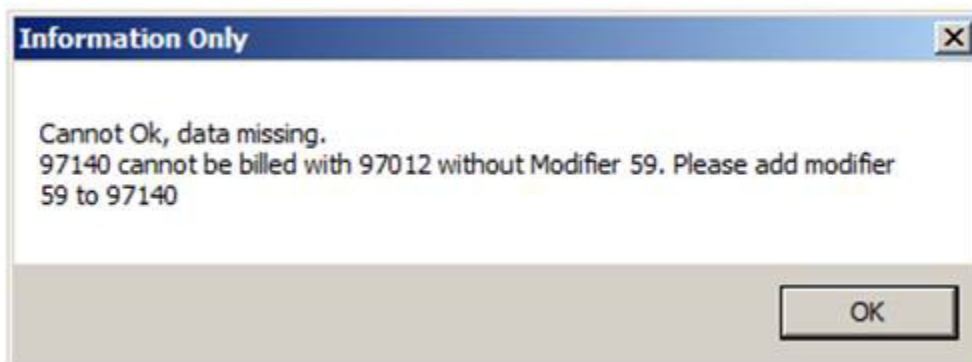
Total Min. 75

CPT Description Manual therapy techniques

Add CPT Charges [X] [Printer] [Refresh]

97140 cannot be billed with 97012 without Modifier 59. Please add modifier 59 to 97140

To remedy the problem, simply enter 59 in the Mod. Field (see example above) for CPT Code charge 97140. If you ignore the warning, Planetrehab will warn you again when you check off "Ready to Bill". The claim will not be billed if you do not resolve the conflict. To resolve it, click back to the charge screen and either follow the on-screen instructions or delete the charge.



Reset Screen Size

Periodically, some users need to reset the size of their Planetrehab interface. For example, in Appointment Processing, if you cannot see the buttons at the bottom of the screen, you need to reset the size of the Appointment Processing screen (or any other screen that is not completely viewable). To automatically reset all screen sizes, close all open screens and go to the File menu and select *Clear Window Preferences*. You will be asked if you are sure and you must answer yes or no. This function will not delete any Planetrehab data and simply reset all screens to their original size.